

Non-Sporting Group												
	Metric	2008	2009	2010	2011	2012	2013	2014	2015	2016	2017	Notes
Litter #'s & Litter Related Stats	Registered Litters	30,762	28,499	26,758	25,034	24,836	24,394	25,376	26,652	29,922	33,716	# AKC litters registered each year
	Litter Complement	128,301	118,284	112,273	105,359	104,700	102,047	106,790	112,664	128,061	146,017	# Pups in each year's litters (known as the "Complement")
	Average Complement	4.17	4.15	4.20	4.21	4.22	4.18	4.21	4.23	4.28	4.33	Average # of pups per litter
	Individually Registered Pups (to date)	54,094	48,783	46,611	45,356	45,217	45,209	47,628	50,272	54,450	47,306	# Pups from each year's litters individually registered (to date)
	Actual Return Rate (to date)	42.2%	41.2%	41.5%	43.0%	43.2%	44.3%	44.6%	44.6%	42.5%	32.4%	% Pups from each year's litters individually registered (to date)
	Limited Registrations (to date)	4,750	4,718	4,704	4,966	5,335	5,545	6,210	6,900	8,299	8,488	# Limited Registrations from each year's litters (to date)
	% Complement Registered Limited (to date)	3.7%	4.0%	4.2%	4.7%	5.1%	5.4%	5.8%	6.1%	6.5%	5.8%	% Pups from each year's litters Registered as Limited (to date)
	Limited Revoked (to date)	76	93	70	86	73	98	96	98	84	45	# Limited Revoked Dogs from each year's litters (to date)
	Litters from Revoked Limited (to date)	72	87	69	83	71	95	92	90	74	35	Litters involving each year's Revoked Limited (to date)
	Complement Bitches in Conformation	2,739	2,697	2,597	2,363	2,374	2,254	2,129	2,055	2,070	1,263	# Bitches from each year's litters in Conformation (to date)
	Complement Dogs in Conformation	2,298	2,114	2,091	1,865	1,898	1,828	1,601	1,581	1,584	961	# Males from each year's litters in Conformation (to date)
	Total Complement in Conformation (to date)	5,037	4,811	4,688	4,228	4,272	4,082	3,730	3,636	3,654	2,224	Total from each year's litters in Conformation (to date)
	% Complement in Conformation (to date)	3.9%	4.1%	4.2%	4.0%	4.1%	4.0%	3.5%	3.2%	2.9%	1.5%	% of each year's litters in Conformation (to date)
	Complement Bitches Bred	11,168	10,405	9,767	9,564	10,248	10,210	10,949	10,874	7,805	1,261	Bitches from each year's litters that have been bred (to date)
	Complement Dogs Bred	5,151	4,551	4,336	4,121	4,210	4,139	4,226	4,196	3,706	821	Males from each year's litters that have been bred (to date)
	Total Complement Bred (to date)	16,319	14,956	14,103	13,685	14,458	14,349	15,175	15,070	11,511	2,082	Total from each year's litters that have been bred (to date)
% Complement Bred (to date)	12.7%	12.6%	12.6%	13.0%	13.8%	14.1%	14.2%	13.4%	9.0%	1.4%	% of each year's litters that have been bred (to date)	

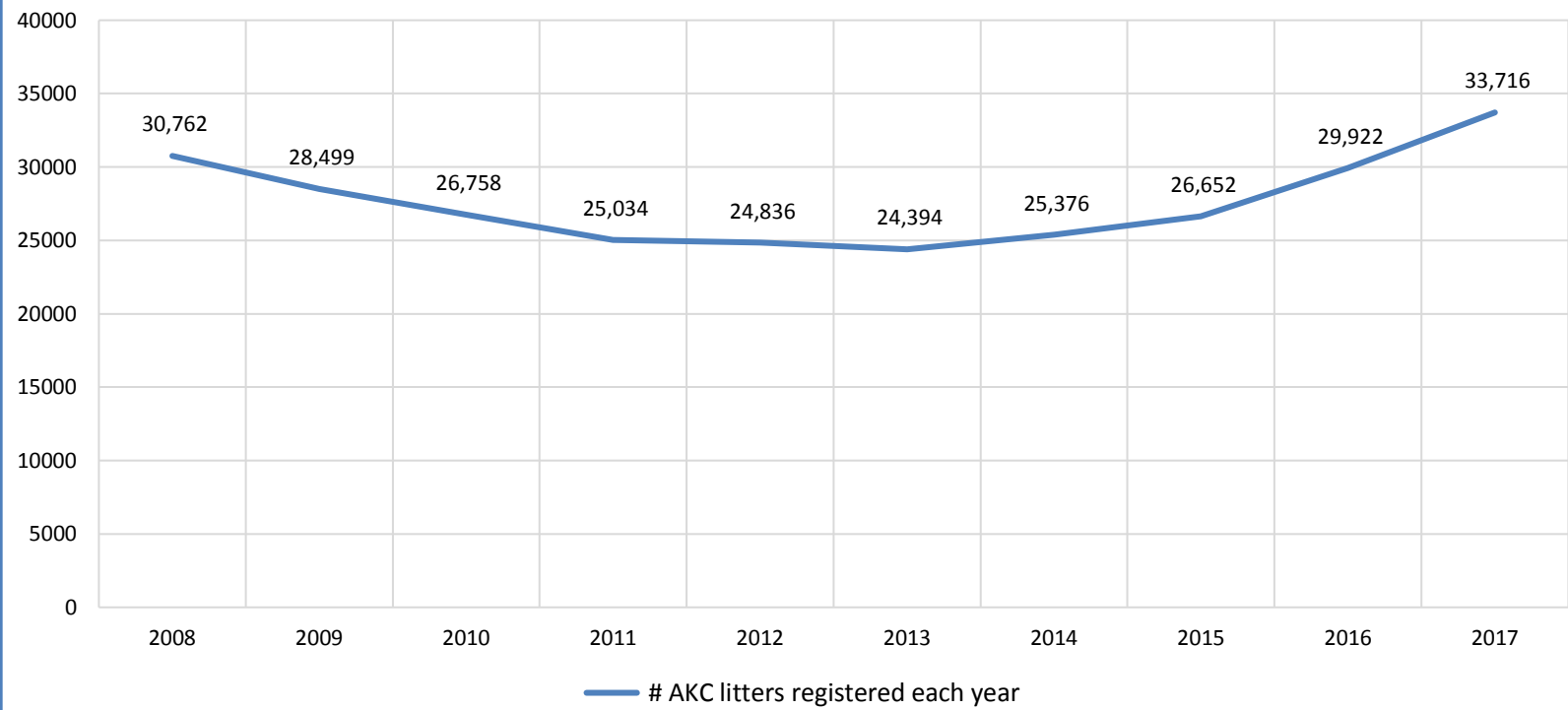
Dog #'s & Dog Related Stats	AKC Dog Registrations	55,395	52,877	48,633	47,841	47,016	46,311	48,003	50,731	55,768	61,269	# Registered from AKC Litters during each year
	FSS Registrations	274	394	380	971	474	397	241	24	39	37	# of FSS Dog Registrations each year
	Conditional Registrations	330	289	230	246	290	283	308	337	360	357	# of Conditional Registrations each year
	Open Registrations	36	-	-	47	14	2	16	14	10	14	# of Open Registrations each year
	Foreign Registrations	1,263	978	807	640	749	662	828	1,112	1,401	1,648	# of Foreign-born Registrations each year
	Total Dogs Registered	57,298	54,538	50,050	49,745	48,543	47,655	49,396	52,218	57,578	63,325	Total Dog Registrations each year
	Unique Bitches in Conformation (each year)	7,409	7,049	6,968	6,795	6,651	6,383	6,074	5,963	5,818	5,642	Unique # of bitches in Conformation each year
	Unique Dogs in Conformation (each year)	6,260	5,975	5,812	5,738	5,640	5,346	5,140	4,979	4,738	4,535	Unique # of males in Conformation each year
	Total Unique in Conformation (each year)	13,669	13,024	12,780	12,533	12,291	11,729	11,214	10,942	10,556	10,177	Unique # in Conformation each year
	Unique Bitches Bred (each year)	26,830	25,927	24,295	22,816	22,411	22,039	22,636	23,712	26,430	29,010	Unique # bitches bred each year
	Unique Dogs Bred (each year)	15,352	14,832	13,875	12,838	12,337	11,942	12,111	12,422	13,460	14,202	Unique # males bred each year
Total Bred (each year)	42,182	40,759	38,170	35,654	34,748	33,981	34,747	36,134	39,890	43,212	Unique # bred each year	

% Change YOY		2008	2009	2010	2011	2012	2013	2014	2015	2016	2017	
Litters	N/A	-7.4%	-6.1%	-6.4%	-0.8%	-1.8%	4.0%	5.0%	12.3%	12.7%		These %'s are calculated to show the change each year from the previous year.
Litter Complement	N/A	-7.8%	-5.1%	-6.2%	-0.6%	-2.5%	4.6%	5.5%	13.7%	14.0%		
Registered Pups	N/A	-9.8%	-4.5%	-2.7%	-0.3%	0.0%	5.4%	5.6%	8.3%	-13.1%		

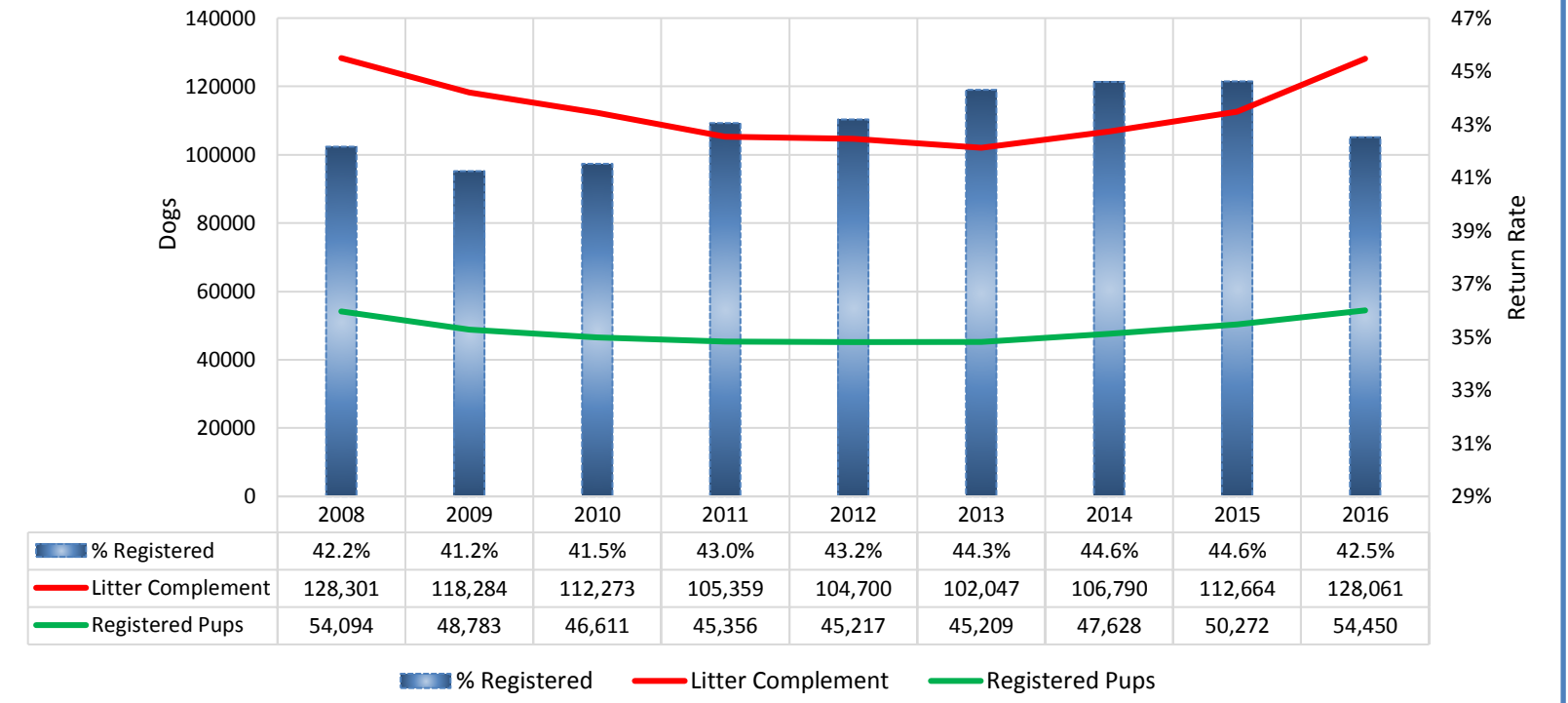
% Change Relative 2008		2008	2009	2010	2011	2012	2013	2014	2015	2016	2017	
Litters	0.0%	-7.4%	-13.0%	-18.6%	-19.3%	-20.7%	-17.5%	-13.4%	-2.7%	9.6%		These %'s are calculated to show the change each year compared to 2008.
Litter Complement	0.0%	-7.8%	-12.5%	-17.9%	-18.4%	-20.5%	-16.8%	-12.2%	-0.2%	13.8%		
Registered Pups	0.0%	-9.8%	-13.8%	-16.2%	-16.4%	-16.4%	-12.0%	-7.1%	0.7%	-12.5%		

Non-Sporting Group

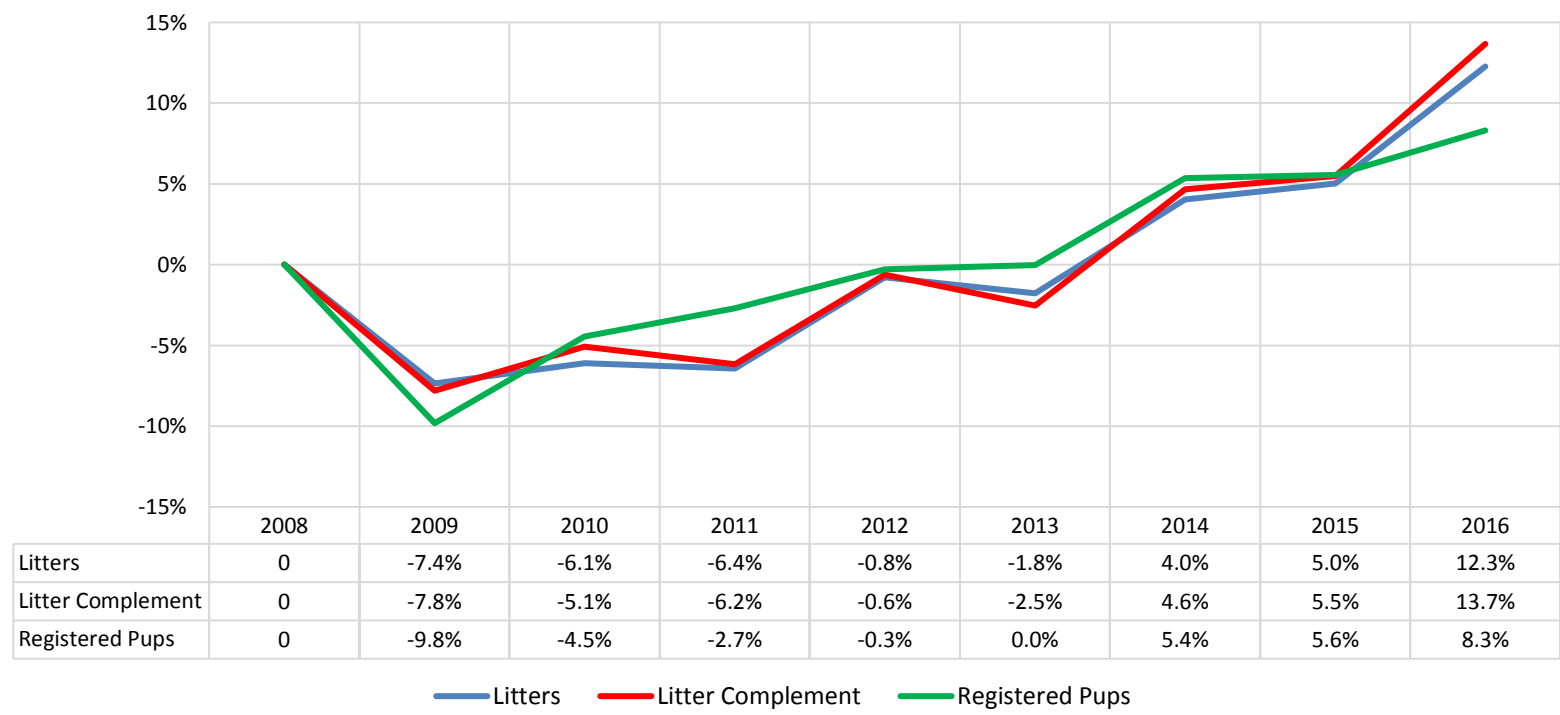
Litters



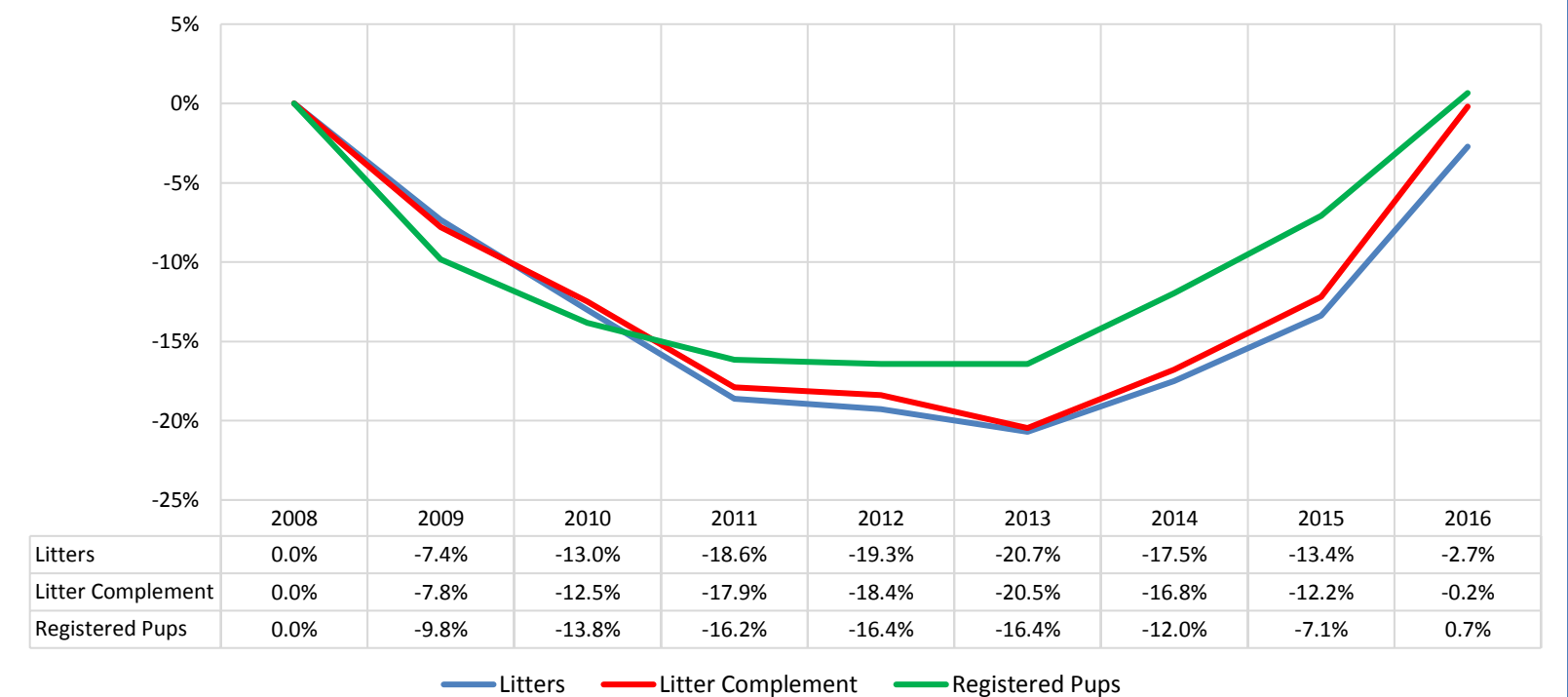
% of Each Year's Litter Complement that were Eventually Registered



Litter Data: % Change from Previous Year (YoY)

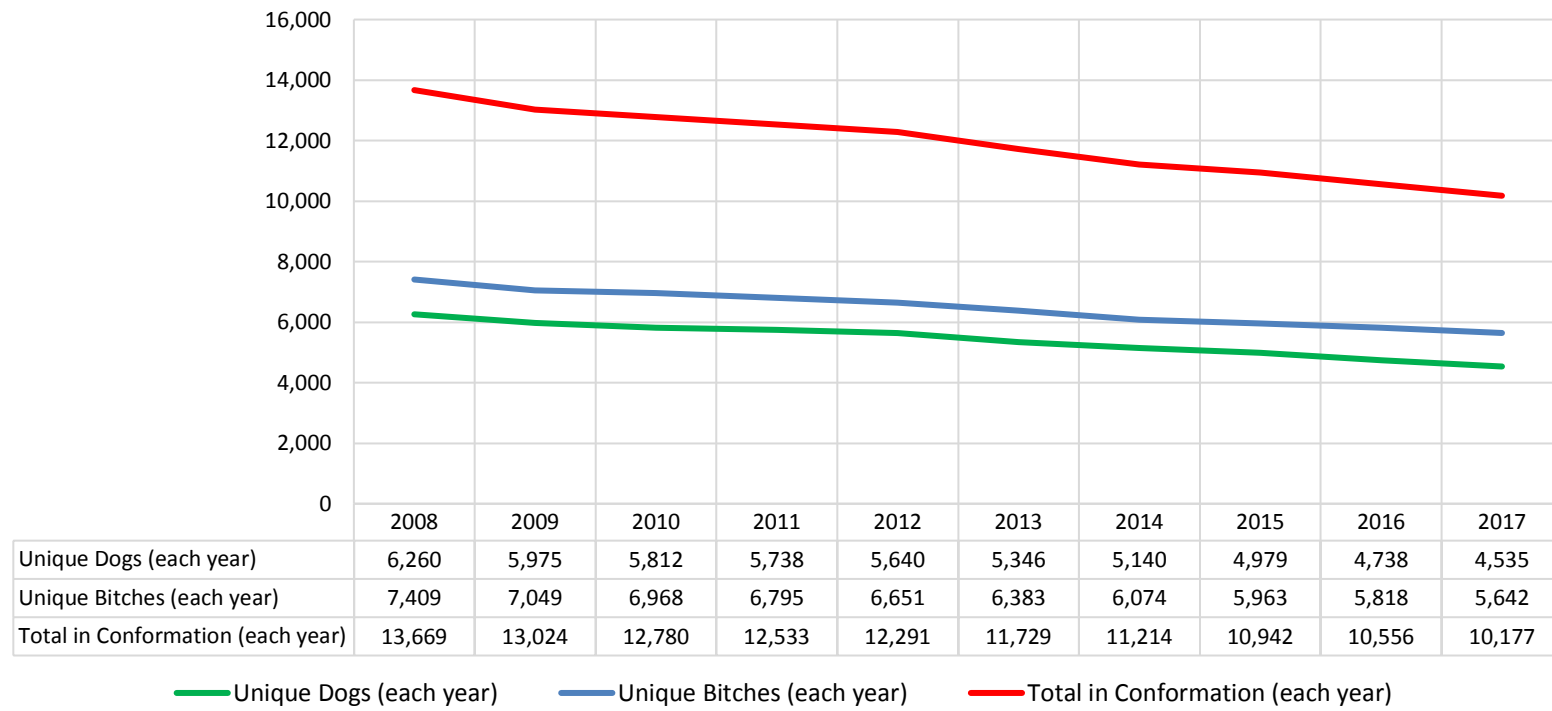


Litter Data: % Change Relative to 2008

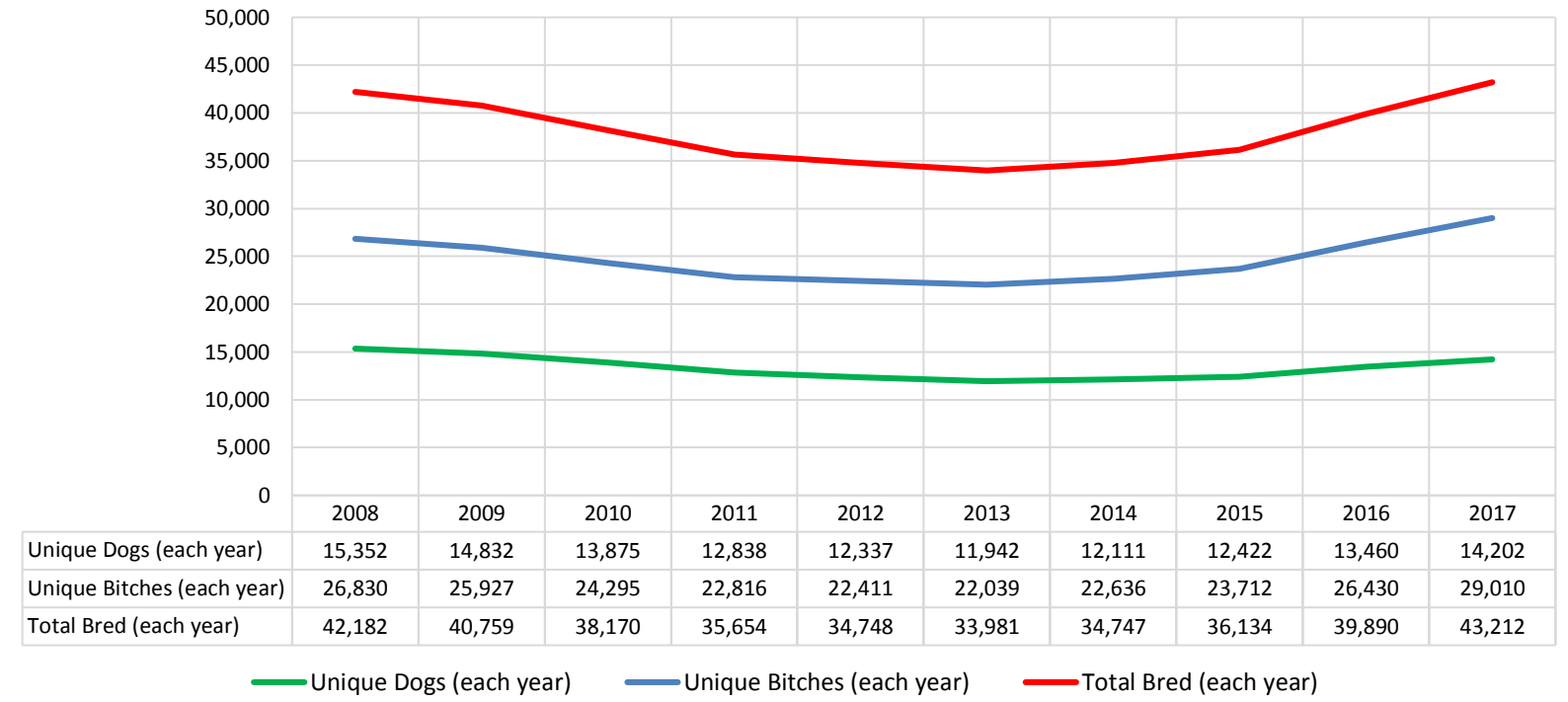


Non-Sporting Group

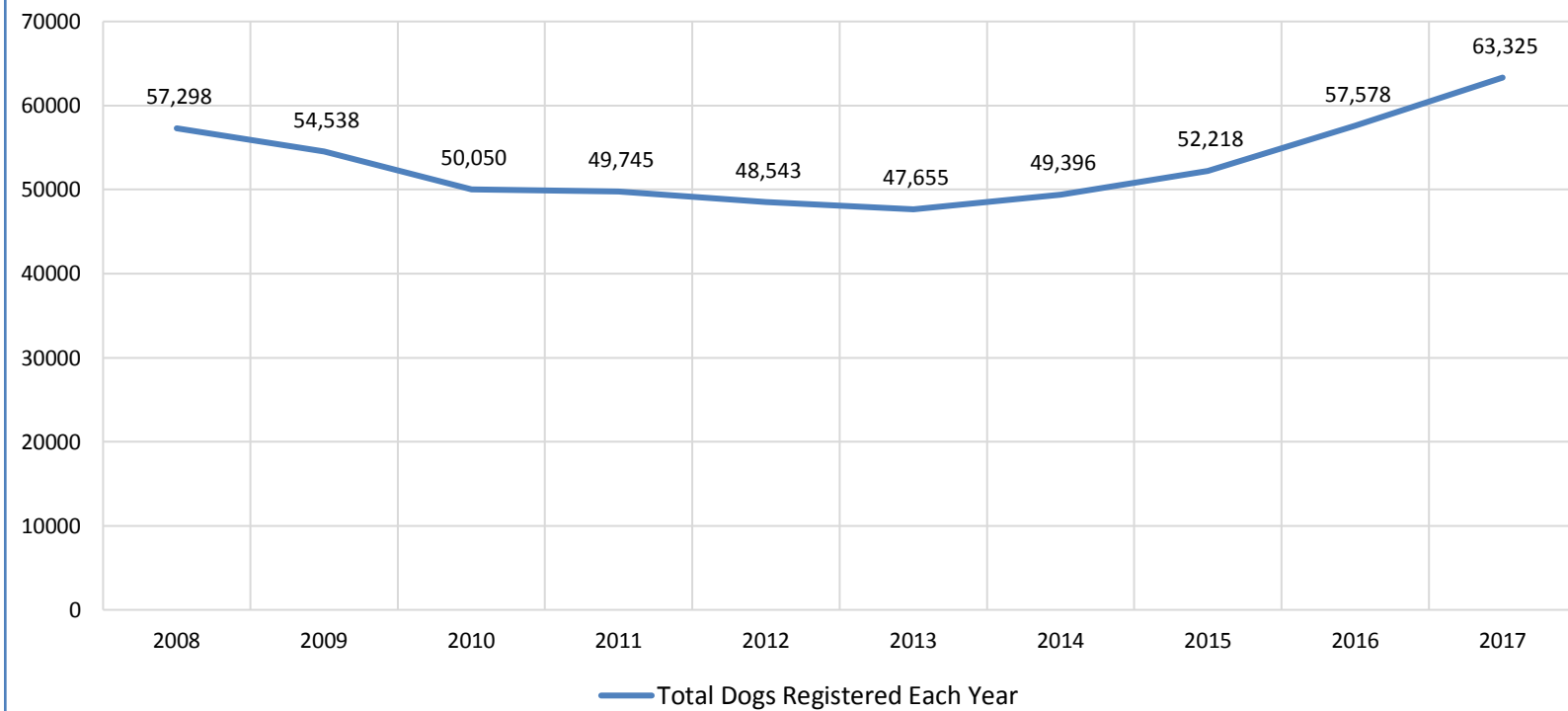
Competing: Unique Individual Dogs & Bitches in Conformation Each Year



Breeding: Unique Individual Dogs & Bitches Bred Each Year



Dogs Registered (including FSS, Open, Conditional & Foreign)



% of Each Year's Litter Complement that have been Shown or Bred (to date)

