

Keeshonden												
Metric	2008	2009	2010	2011	2012	2013	2014	2015	2016	2017	Notes	
Litter #'s & Litter Related Stats	Registered Litters	225	186	197	162	165	169	166	161	166	176	# AKC litters registered each year
	Litter Complement	1,158	876	1,006	845	876	909	902	815	907	938	# Pups in each year's litters (known as the "Complement")
	Average Complement	5.15	4.71	5.11	5.22	5.31	5.38	5.43	5.06	5.46	5.33	Average # of pups per litter
	Individually Registered Pups (to date)	606	465	545	450	478	519	567	486	531	542	# Pups from each year's litters individually registered (to date)
	Actual Return Rate (to date)	52.3%	53.1%	54.2%	53.3%	54.6%	57.1%	62.9%	59.6%	58.5%	57.8%	% Pups from each year's litters individually registered (to date)
	Limited Registrations (to date)	154	117	157	151	164	191	247	221	241	259	# Limited Registrations from each year's litters (to date)
	% Complement Registered Limited (to date)	13.3%	13.4%	15.6%	17.9%	18.7%	21.0%	27.4%	27.1%	26.6%	27.6%	% Pups from each year's litters Registered as Limited (to date)
	Limited Revoked (to date)	1	1	2	1	2	8	10	3	2	2	# Limited Revoked Dogs from each year's litters (to date)
	Litters from Revoked Limited (to date)	1	1	2	1	2	8	10	3	2	1	Litters involving each year's Revoked Limited (to date)
	Complement Bitches in Conformation	110	90	107	83	111	99	96	87	83	50	# Bitches from each year's litters in Conformation (to date)
	Complement Dogs in Conformation	123	98	100	80	79	81	75	72	64	38	# Males from each year's litters in Conformation (to date)
	Total Complement in Conformation (to date)	233	188	207	163	190	180	171	159	147	88	Total from each year's litters in Conformation (to date)
	% Complement in Conformation (to date)	20.1%	21.5%	20.6%	19.3%	21.7%	19.8%	19.0%	19.5%	16.2%	9.4%	% of each year's litters in Conformation (to date)
	Complement Bitches Bred	75	66	75	53	67	59	48	31	11	2	Bitches from each year's litters that have been bred (to date)
	Complement Dogs Bred	60	42	40	33	30	31	23	10	11	1	Males from each year's litters that have been bred (to date)
Total Complement Bred (to date)	135	108	115	86	97	90	71	41	22	3	Total from each year's litters that have been bred (to date)	
% Complement Bred (to date)	11.7%	12.3%	11.4%	10.2%	11.1%	9.9%	7.9%	5.0%	2.4%	0.3%	% of each year's litters that have been bred (to date)	

Dog #'s & Dog Related Stats	AKC Dog Registrations	590	508	580	489	428	521	558	532	513	570	# Registered from AKC Litters during each year
	FSS Registrations	-	-	-	-	-	-	-	-	-	-	# of FSS Dog Registrations each year
	Conditional Registrations	18	20	9	11	12	18	5	10	5	9	# of Conditional Registrations each year
	Open Registrations	1	-	-	-	-	-	-	-	-	-	# of Open Registrations each year
	Foreign Registrations	22	14	16	23	23	20	13	18	14	20	# of Foreign-born Registrations each year
	Total Dogs Registered	631	542	605	523	463	559	576	560	532	599	Total Dog Registrations each year
	Unique Bitches in Conformation (each year)	395	347	378	361	338	336	331	345	329	321	Unique # of bitches in Conformation each year
	Unique Dogs in Conformation (each year)	365	364	376	342	318	317	299	310	287	295	Unique # of males in Conformation each year
	Total Unique in Conformation (each year)	760	711	754	703	656	653	630	655	616	616	Unique # in Conformation each year
	Unique Bitches Bred (each year)	197	171	174	149	153	154	148	144	151	154	Unique # bitches bred each year
Unique Dogs Bred (each year)	137	129	125	114	114	108	111	101	100	105	Unique # males bred each year	
Total Bred (each year)	334	300	299	263	267	262	259	245	251	259	Unique # bred each year	

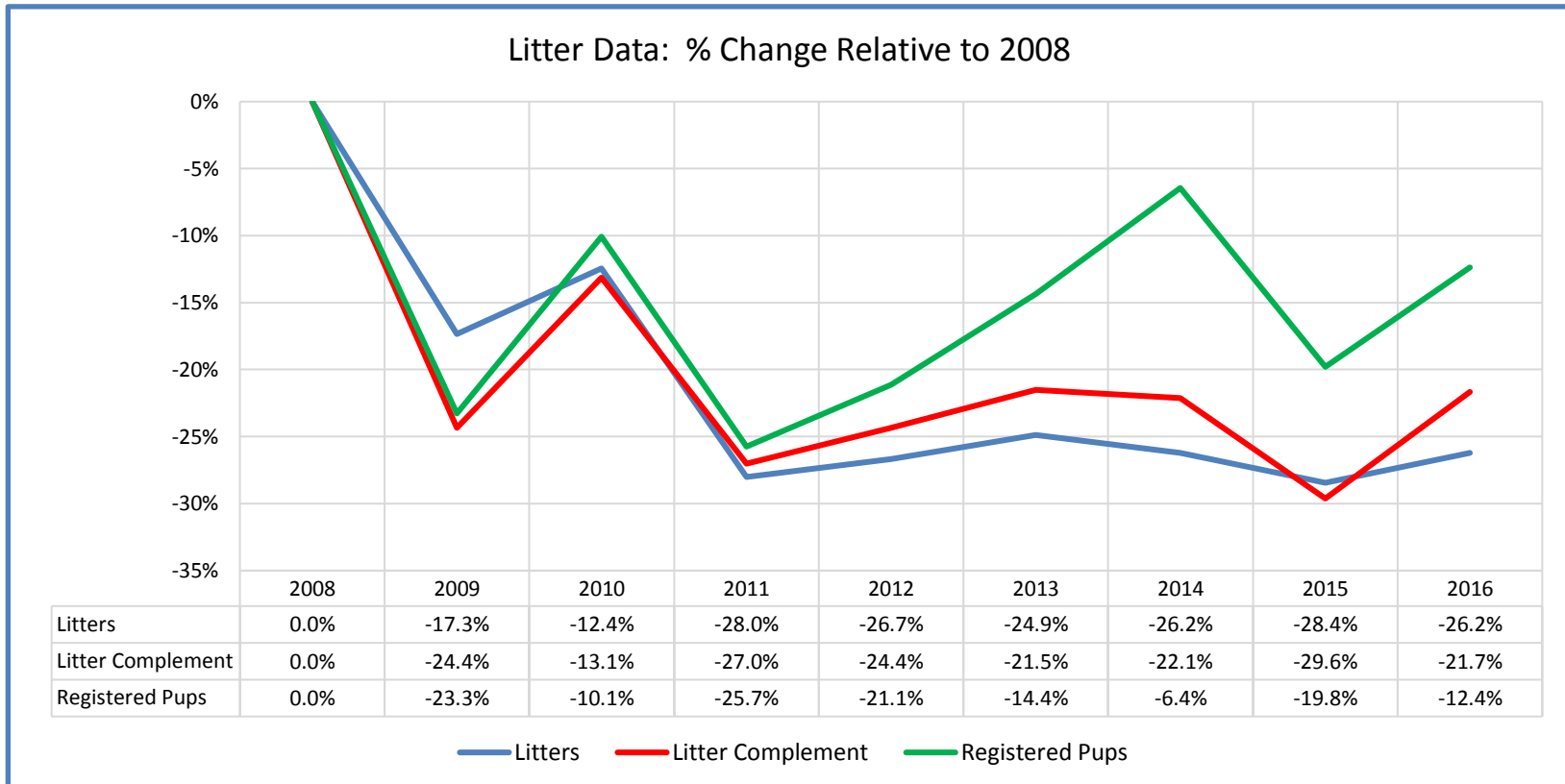
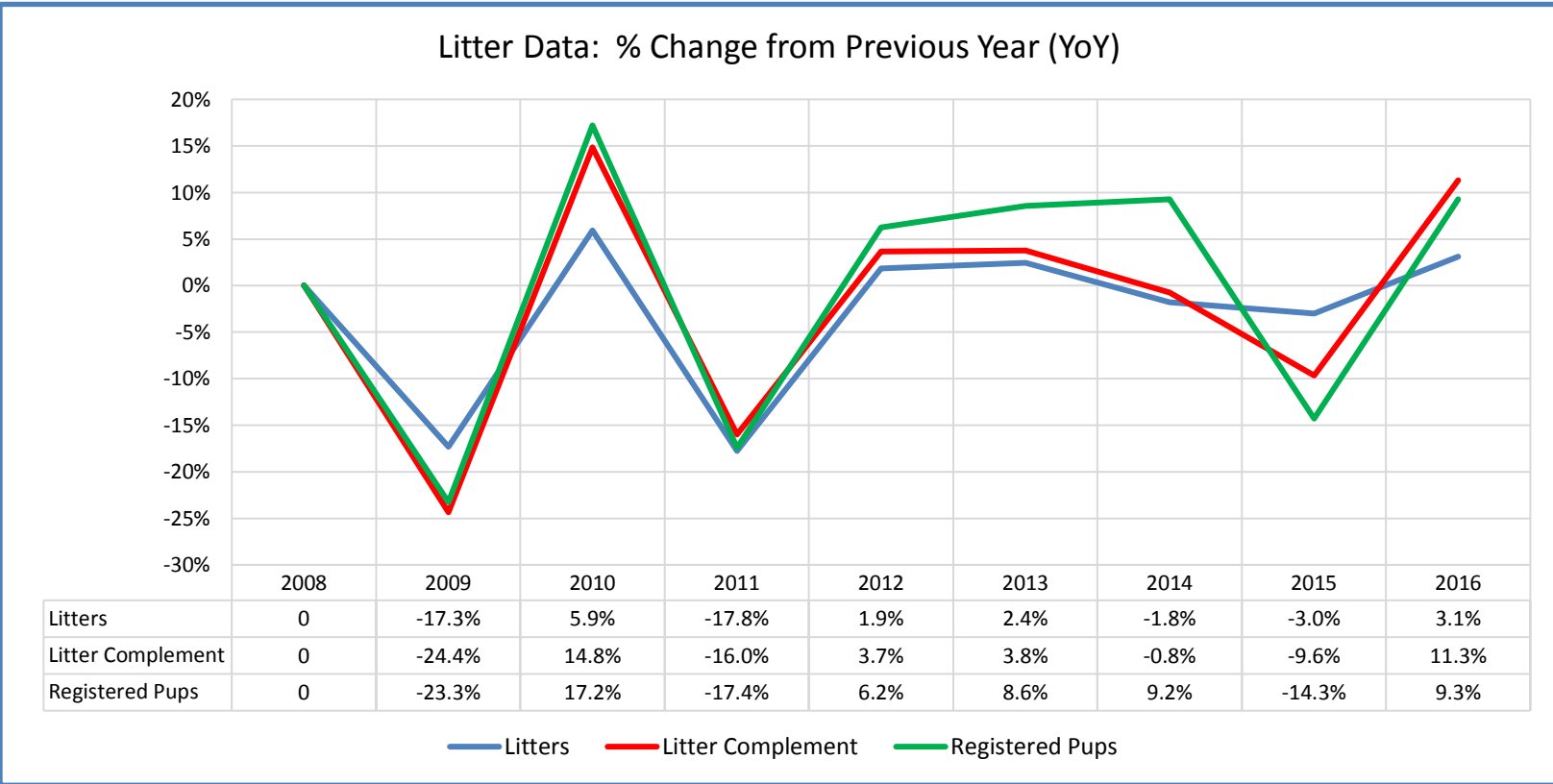
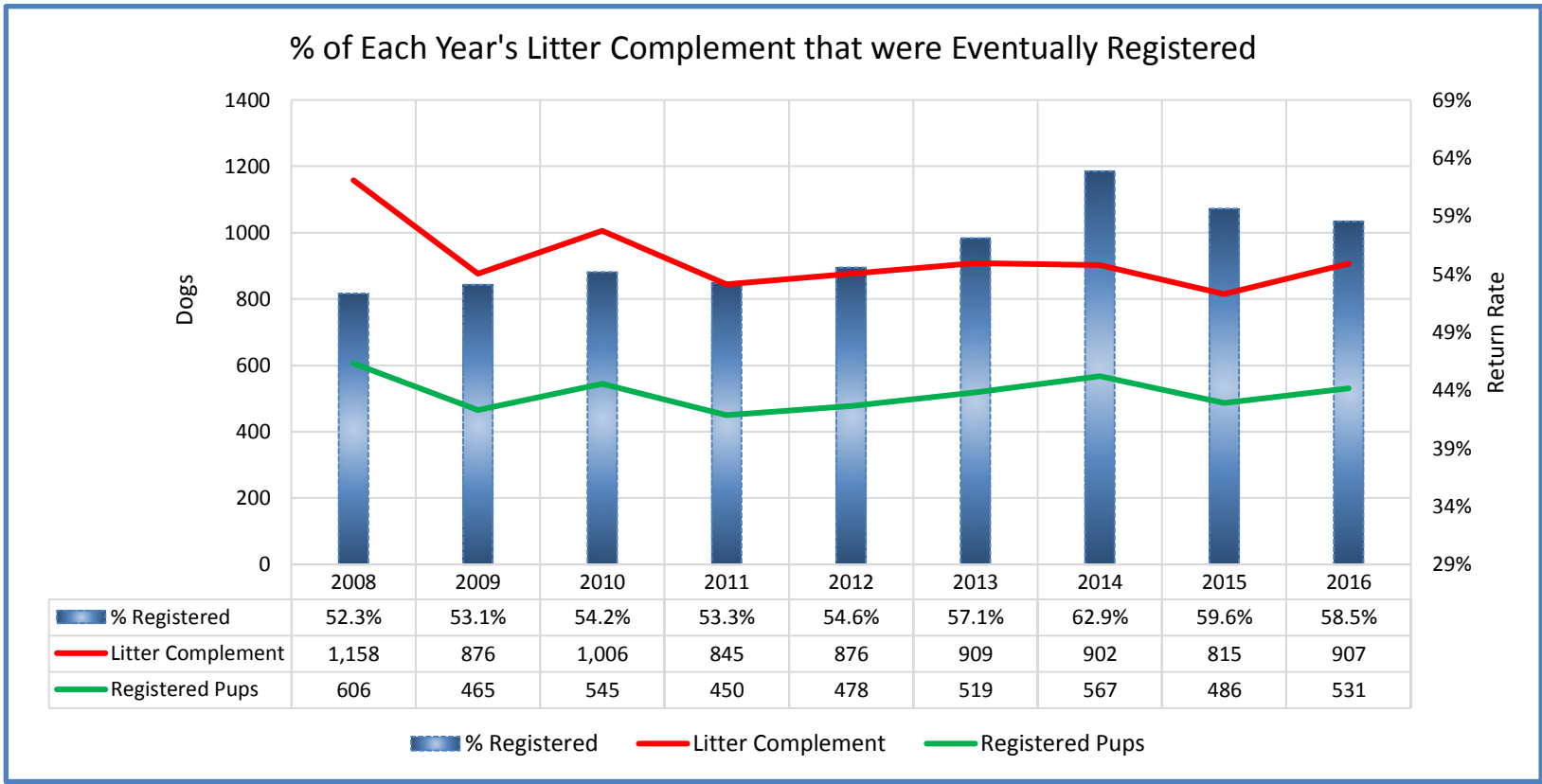
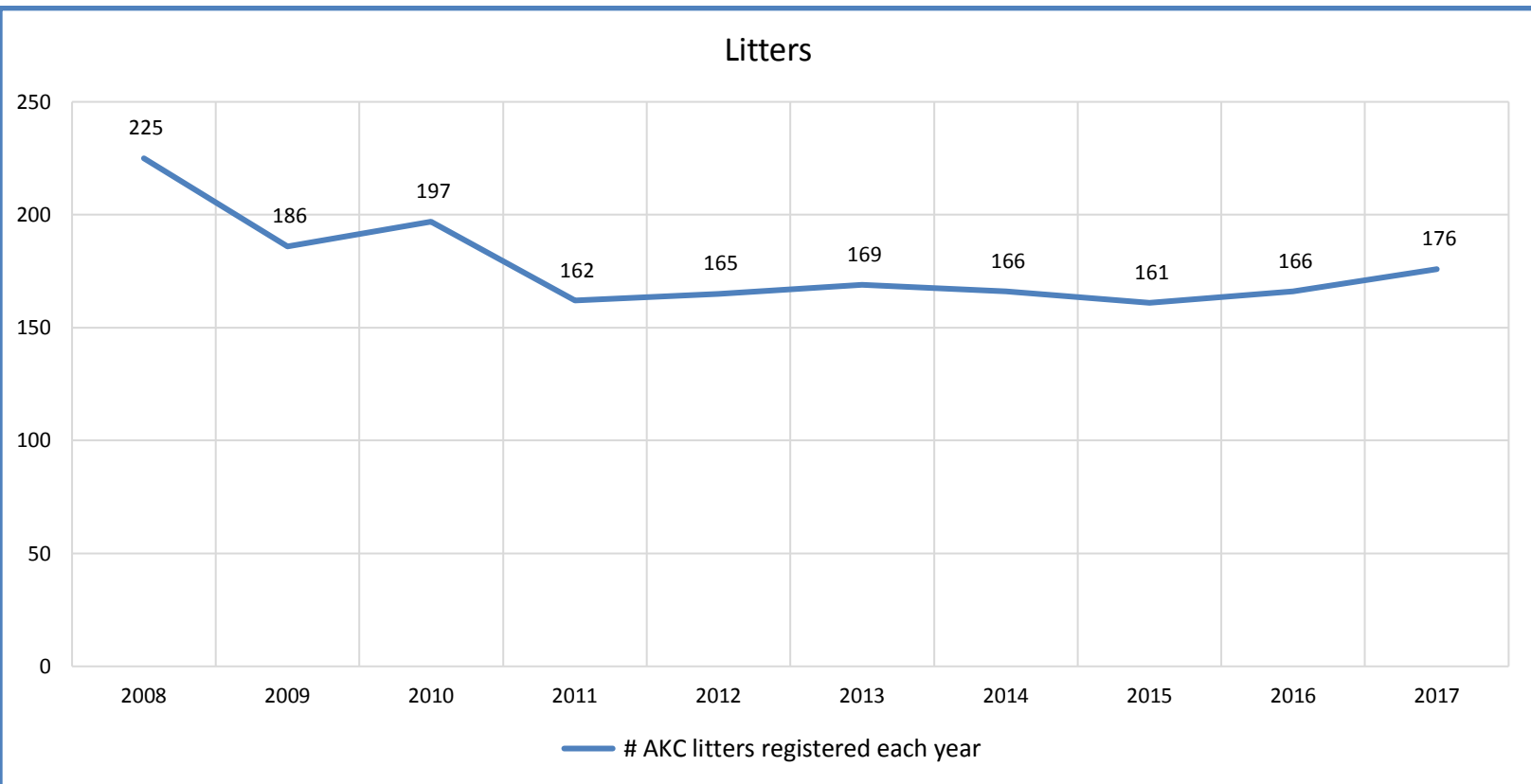
% Change YOY	2008	2009	2010	2011	2012	2013	2014	2015	2016	2017
Litters	N/A	-17.3%	5.9%	-17.8%	1.9%	2.4%	-1.8%	-3.0%	3.1%	6.0%
Litter Complement	N/A	-24.4%	14.8%	-16.0%	3.7%	3.8%	-0.8%	-9.6%	11.3%	3.4%
Registered Pups	N/A	-23.3%	17.2%	-17.4%	6.2%	8.6%	9.2%	-14.3%	9.3%	2.1%

These %'s are calculated to show the change each year from the previous year.

% Change Relative 2008	2008	2009	2010	2011	2012	2013	2014	2015	2016	2017
Litters	0.0%	-17.3%	-12.4%	-28.0%	-26.7%	-24.9%	-26.2%	-28.4%	-26.2%	-21.8%
Litter Complement	0.0%	-24.4%	-13.1%	-27.0%	-24.4%	-21.5%	-22.1%	-29.6%	-21.7%	-19.0%
Registered Pups	0.0%	-23.3%	-10.1%	-25.7%	-21.1%	-14.4%	-6.4%	-19.8%	-12.4%	-10.6%

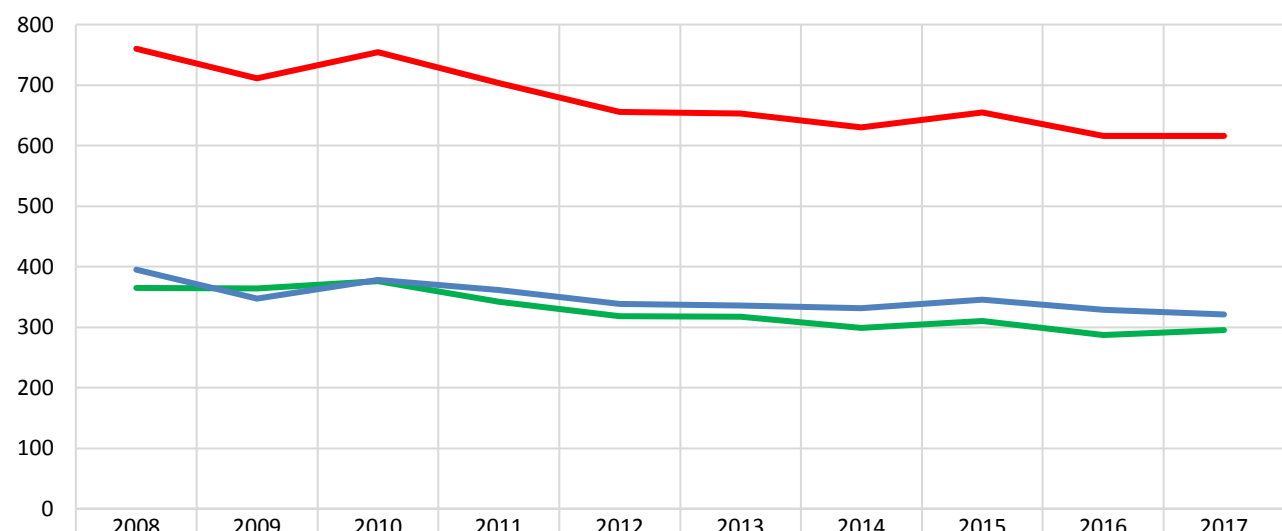
These %'s are calculated to show the change each year compared to 2008.

Keeshonden



Keeshonden

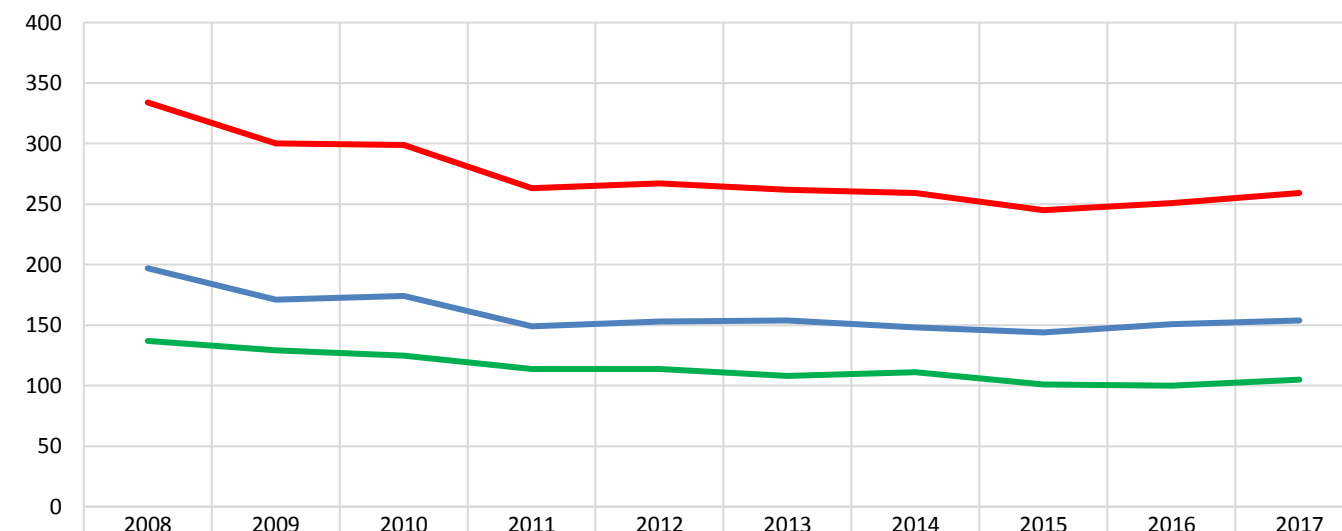
Competing: Unique Individual Dogs & Bitches in Conformation Each Year



	2008	2009	2010	2011	2012	2013	2014	2015	2016	2017
Unique Dogs (each year)	365	364	376	342	318	317	299	310	287	295
Unique Bitches (each year)	395	347	378	361	338	336	331	345	329	321
Total in Conformation (each year)	760	711	754	703	656	653	630	655	616	616

— Unique Dogs (each year) — Unique Bitches (each year) — Total in Conformation (each year)

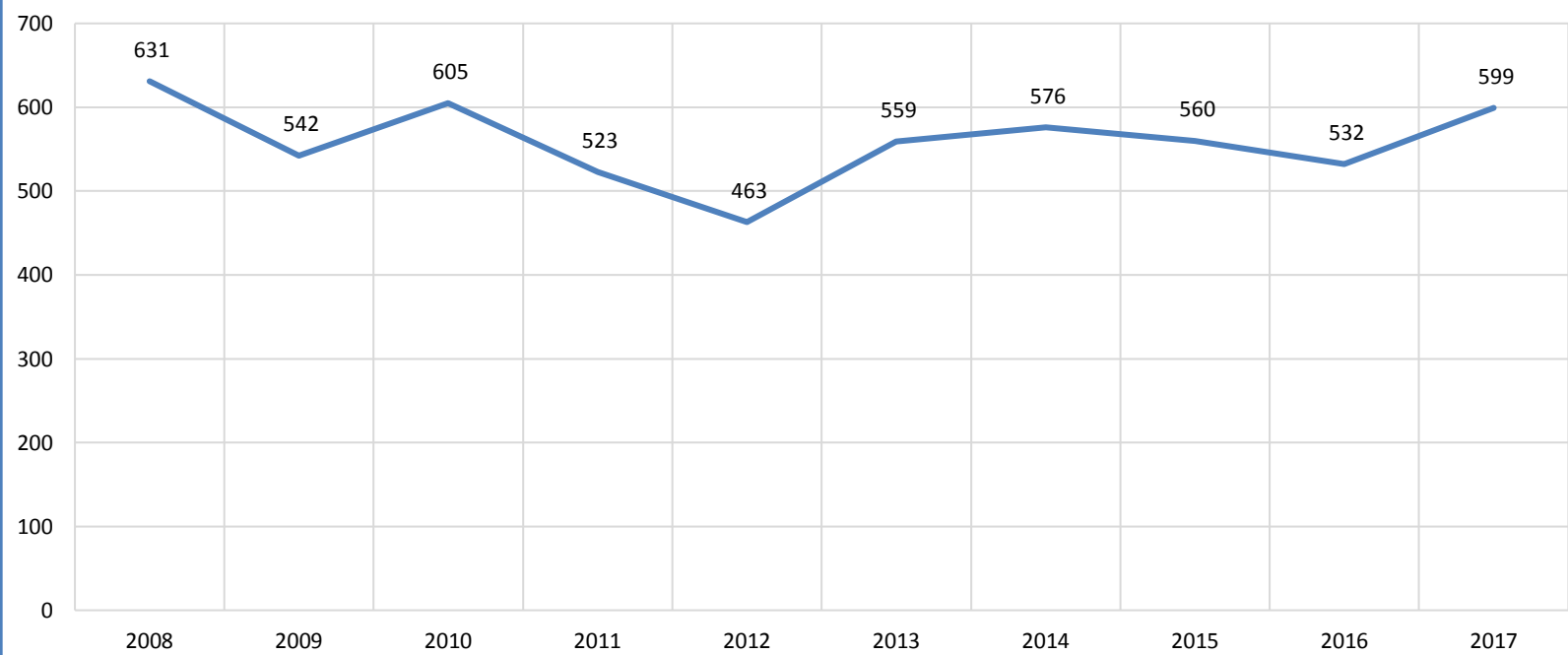
Breeding: Unique Individual Dogs & Bitches Bred Each Year



	2008	2009	2010	2011	2012	2013	2014	2015	2016	2017
Unique Dogs (each year)	137	129	125	114	114	108	111	101	100	105
Unique Bitches (each year)	197	171	174	149	153	154	148	144	151	154
Total Bred (each year)	334	300	299	263	267	262	259	245	251	259

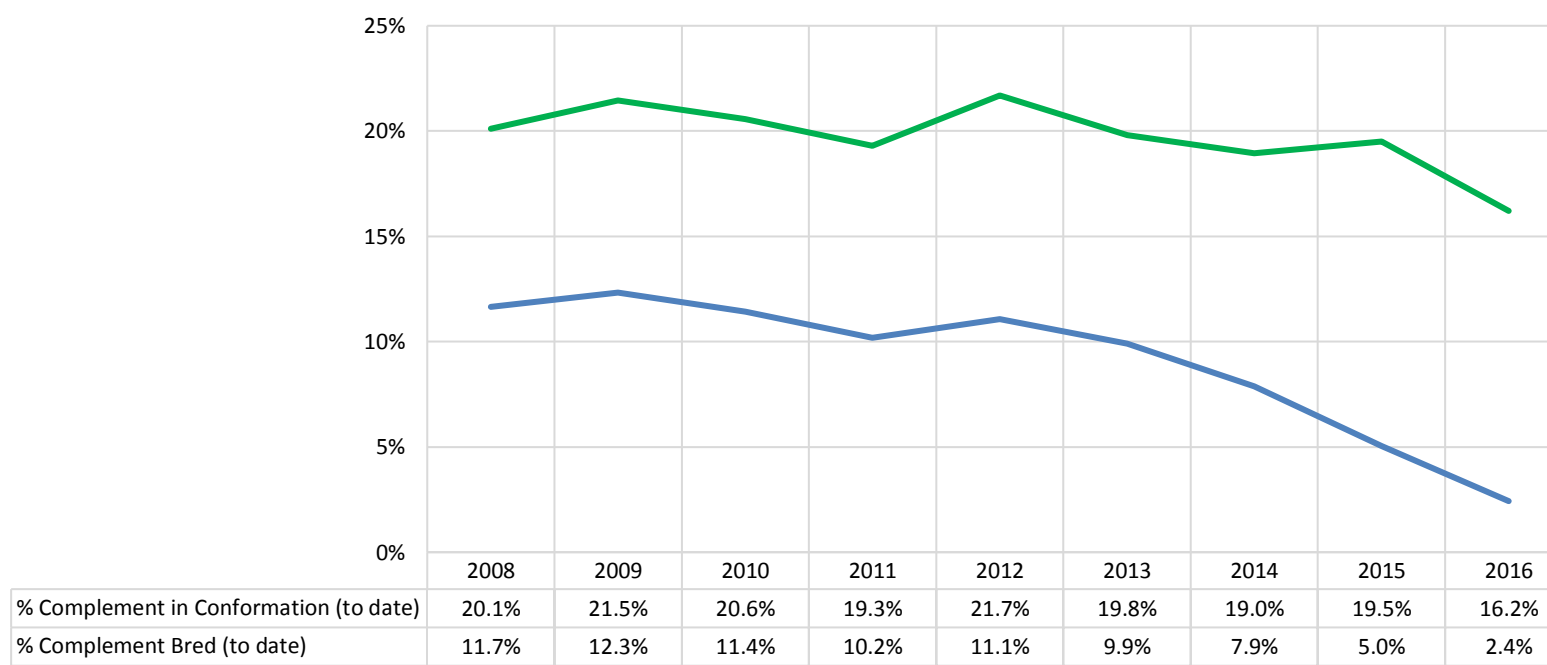
— Unique Dogs (each year) — Unique Bitches (each year) — Total Bred (each year)

Dogs Registered (including FSS, Open, Conditional & Foreign)



— Total Dogs Registered Each Year

% of Each Year's Litter Complement that have been Shown or Bred (to date)



— % Complement in Conformation (to date) — % Complement Bred (to date)